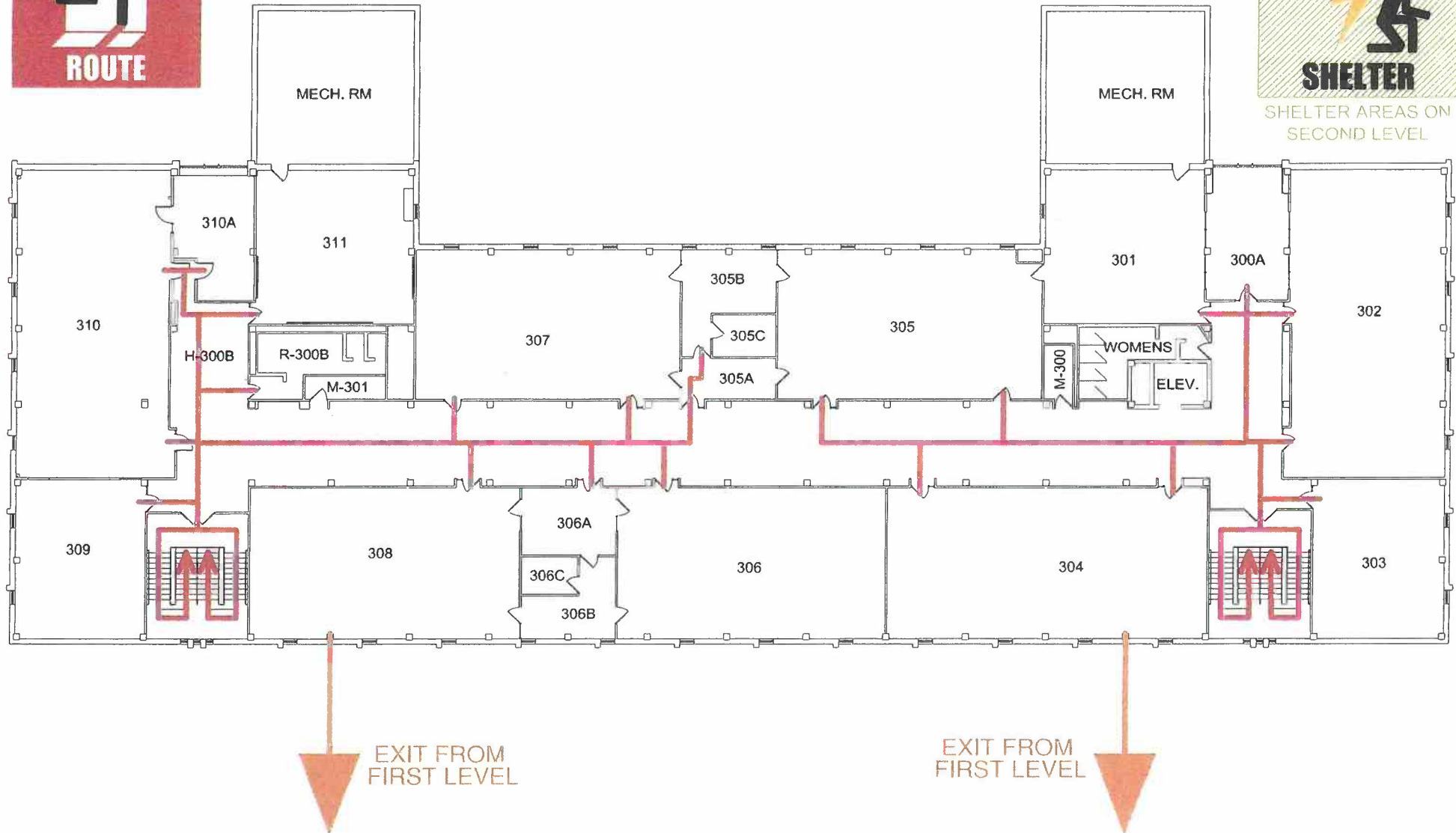




SHELTER AREAS ON SECOND LEVEL



INSTITUTE FOR ENVIRONMENTAL ASSESSMENT

9201 West Broadway Brooklyn Park, MN 55445
Tel: 763.315.7900 Toll Free: 800.233.9513
Fax: 763.315.7920

ORONO HIGH SCHOOL

THIRD LEVEL FLOOR PLAN

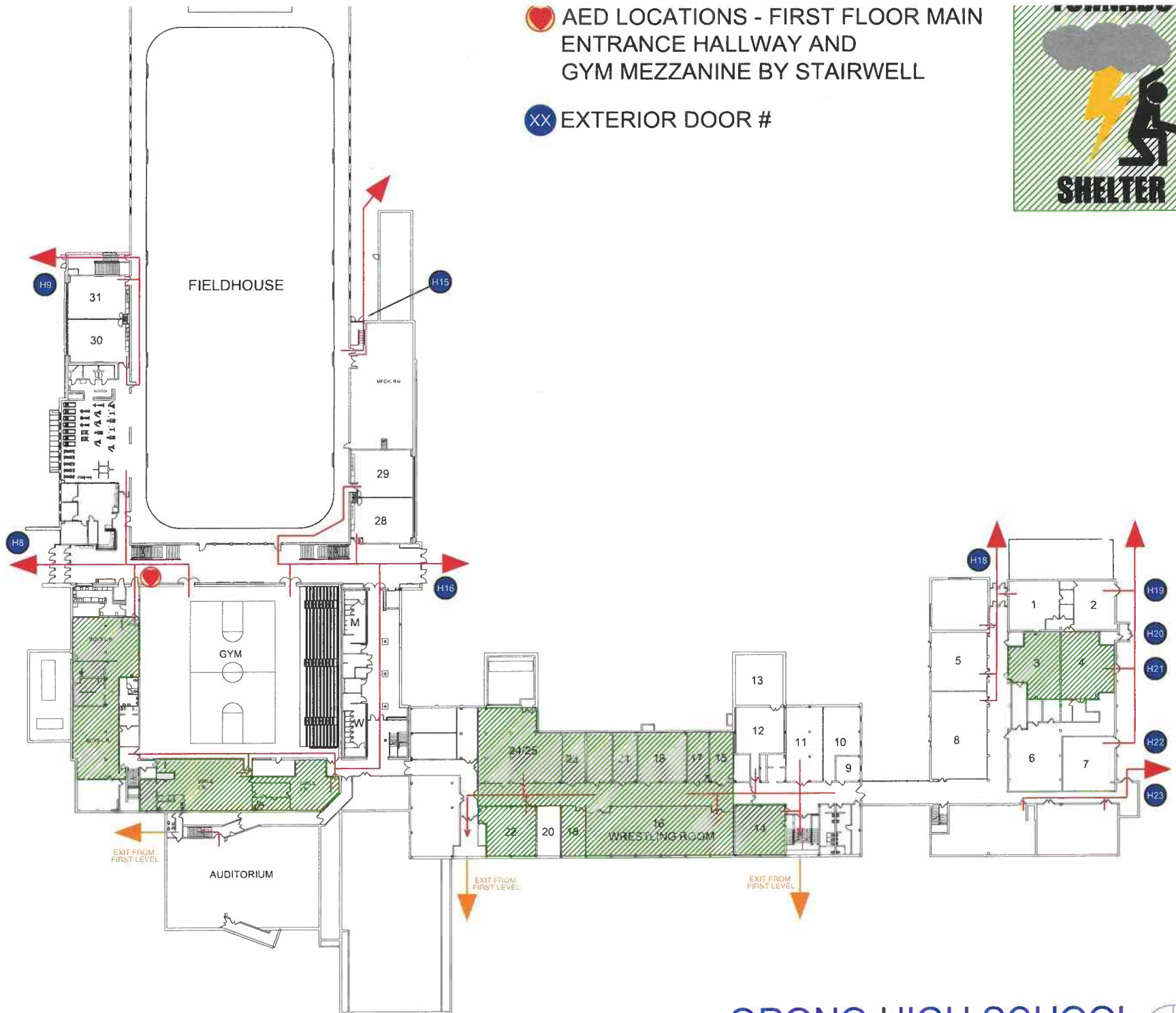
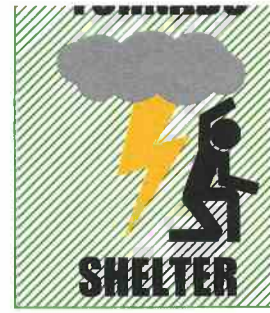
ORONO ISD #278
AUGUST 2009





♥ AED LOCATIONS - FIRST FLOOR MAIN ENTRANCE HALLWAY AND GYM MEZZANINE BY STAIRWELL

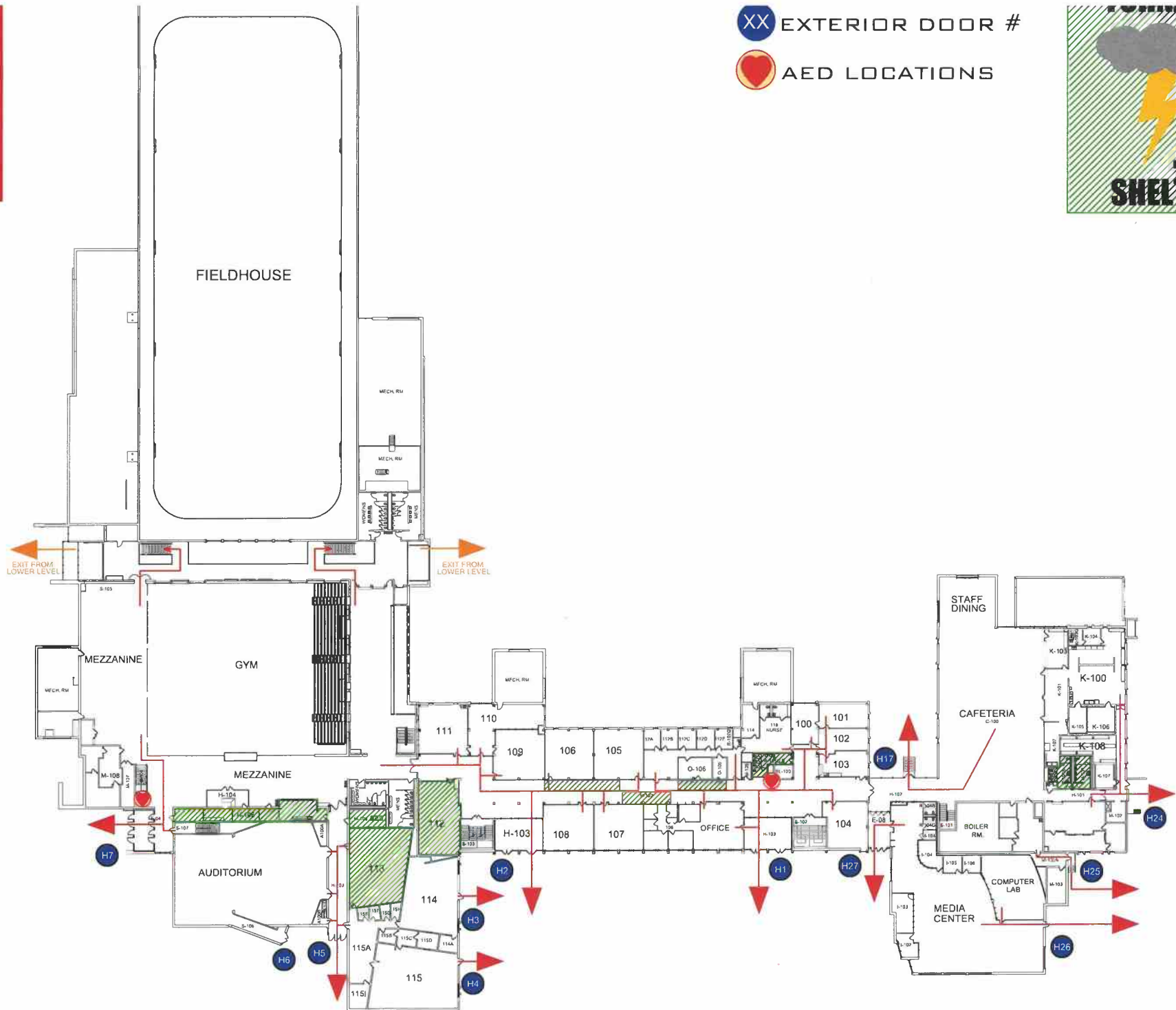
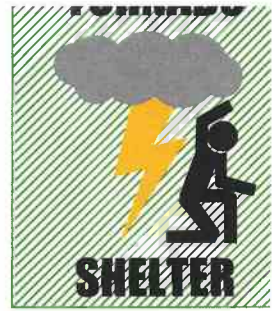
ⓧ EXTERIOR DOOR #

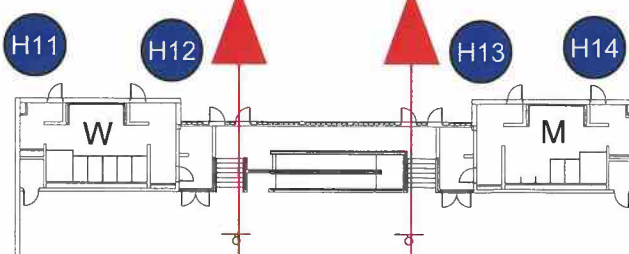
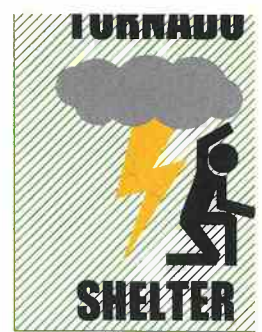




XX EXTERIOR DOOR #

AED LOCATIONS





- XX EXTERIOR DOOR #
- AED LOCATIONS

